

Cogislide Coating Insert

Lubrication free slide baseplate insert providing low friction performance and reduced operating costs

vossloh
enabling green mobility

Cogislide Coating Insert

The Cogislide technology is already a proven solution for eliminating the need for greasing while guaranteeing switch performance and a reduction in driving forces. Its hydrophobic nature and Three-body construction (base metal + Heat Treated NiCh + Anti Corrosion paint) offers the best protection against corrosion and performance which is resistant to aggressive track environments.

This **NEW coating insert** can be applied on a wide variety of existing slide baseplates such as cast-iron, construction steel and carbon steel to bring these benefits to either new slides or as a solution for refurbished baseplates.



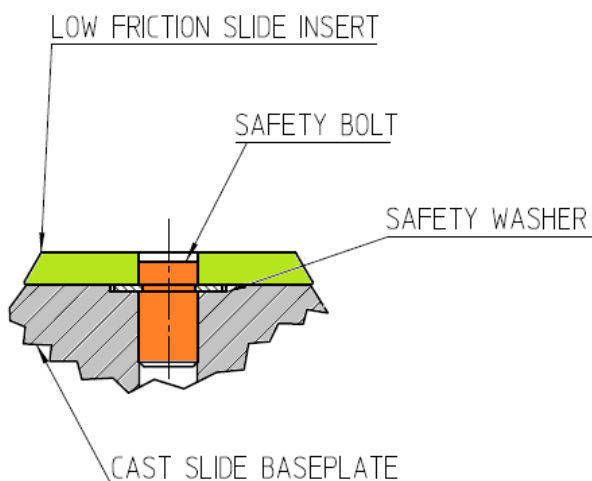
Coating Insert for sliding surfaces of slide chairs



Refurbishment Solution

Existing slide plates can be factory refurbished by machining and fitted with new inserts to improve performance and give them a second life with all the benefits of the low friction solution.

- / Quick and easy to fit, install and remove
- / Simple and fast disassembly
- / No special tools required
- / Shafts (Safety Bolt) guaranteed for life



ADVANTAGES

- / Friction coefficient is low & stable, reducing the driving force and allowing roller-free switches
- / Reduced production lead times
- / More flexible, adapts to all parts without the need for pattern modifications

ECO Design to increase the life span of track equipment



- ⇒ Reduced Operation and maintenance costs
- ⇒ Reduced Driving force of the turnout resulting in less maintenance and higher reliability and service life
- ⇒ Reduced logistics costs as the baseplates can be manufactured locally with smaller company factory manufactured inserts shipped more economically



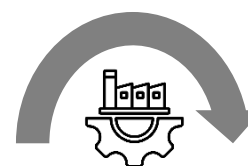
LLC
Improved

Significant gains



ECO
Friendly

Reduced carbon footprint



Footprint
Decreased

Leadtime upgraded