

Foundry centre of expertise

The largest production capacity of turnout crossings in the world

vossloh
enabling green mobility

Vossloh foundry centre of expertise, international leader of cast manganese common crossings

Vossloh is a global leader in the field of turnouts and associated equipment for all types of rail networks. The track crossing is located at the centre of the turnout and provides the continuity of two intersecting routes. Subjected to high stresses, it is a key element in comfort and safety.

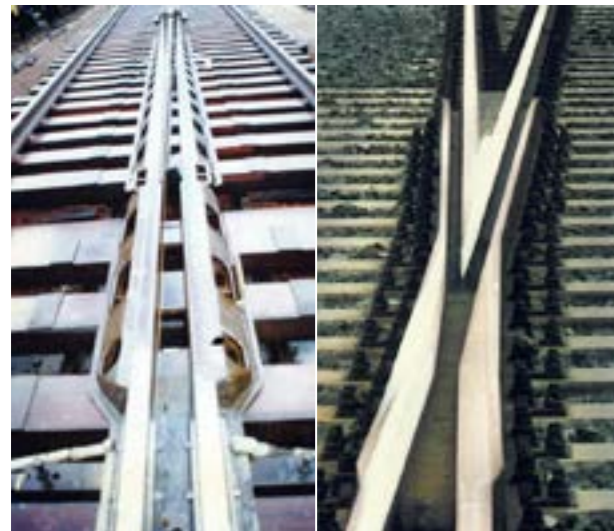
Vossloh produces more than **4000 crossings per year**
60,000 crossings are already welded in tracks...

Located in the nord of France, the Outreau foundry has been producing track crossings and cast manganese cradles for railway infrastructures throughout the world since 1954.

With 200 employees, the foundry designs and manufactures cast manganese, fishplated or welded common crossings to suit all modes of transport guided by the rails. The foundry also supplies crossings that are pre-hardened by explosion.

With highly qualified staff and the most modern production facilities, the Outreau site is the foundry centre of expertise of the Vossloh Group.

Capable of making crossings for all networks (national lines, high-speed lines, suburban networks, metros and trams), the Outreau site has an internationally recognized expertise.



Crossings and associated products are delivered to both track turnout manufacturers and rail networks, on all continents, in more than 50 countries.



The site handles all stages, including the design, shipping, manufacturing, quality control and administrative stages. Our crossings are subjected to extreme conditions in terms of axle loads, frequency and/or speed, and climate.

The Outreau site has a policy of innovation in the field of alloys and is continuously improving its processes. The objective is to improve the speed, capacity, frequency and safety of networks.

Its experience also enables to offer a maintenance support service, which includes everything from expert assessments to building up by arc welding and in-track reprofiling operations.

Foundry centre of expertise, leadership in quality products

Quality foundry technology for optimized safety

This global foundry expertise has enabled Vossloh to strengthen its international leadership in the production of common crossings.



- Certified welding process following a static (folding test) and dynamic (fatigue test) inspection
- Flash welding with Maustinox Mn® insert
- 2 flash welding machines incorporated into the production line: more than 60,000 welds
- CATIA software for 3D design and computerized simulations
- Internal regeneration system for casting sand

Homologations

SNCF, RATP, INFRABEL, RFI, PRORAIL, CFF, BANEDANEMARK, NETWORK RAIL...

The Outreau site supplies crossings and cradles that meet the internal health criteria of European standard 15689. ISO certifications.



The centre of excellence for track crossings has become the specialist for crossings pre-hardened by explosion



2010: Homologation of the 1st pre-hardened monobloc crossing by the Swiss railways.

R&D I-Trans programme: 5 years of in-track tests, TTSA (Track Train System Availability) project in collaboration with the Swiss railways and Eurotunnel.

ADVANTAGES OF THE PRE-HARDENED CROSSING

- Increases the load carried by **40 %**
- Decreases maintenance costs by **50 %**
- Overall life cycle costs gain of **20 %**

From drawing board to completion, innovative designs for new and existing channels

Outreau Fonderie
Rue Pierre Curie BP 119
62230 Outreau
France
info@vossloh.com
Tel: +33 3 21 99 53 00

Vossloh Beekay Castings Ltd
25-28, Light Industrial Area
490026 Durg Chhattisgarh
India
contact-india@vossloh-cogifer.com
Tel: +91 9479220007

Amurrio J.V.
Maskuribai, 10
01470 Bilbao
Spain
info@amufer.es
Tel: +34 (94) 415 16

Vossloh Switch Systems
23 rue François Jacob
92500 Rueil-Malmaison Cedex France
info@vossloh.com
vossloh.com