



# Data Lab

Advanced Rail data analysis



## Problem description

### Generating useful insights from data

The data science field has a lot to offer to optimize railway maintenance operations.

We want to build metrics that reflect as closely as possible specific aspects of the reality on the track.

Finding relevant and actionable insight can be a challenge.

For an insight to be useful and actionable, it must be relevant and trustworthy.

Our aim is to create a link between the metrics and the real world. The Data Lab endeavours to facilitate the discovery of these usable insights.

## Solution description

### Unlocking trustworthy insights

The Data Lab is meant to address a wide variety of monitoring data sources and types.

It offers a rich data visualization interface and a large data science toolbox, allowing data scientists to quickly access the data collected and inject their insights into the system.

The Data Lab provides a place for exchanges between all the expertise needed to for the meaningful utilisation of the collected data.

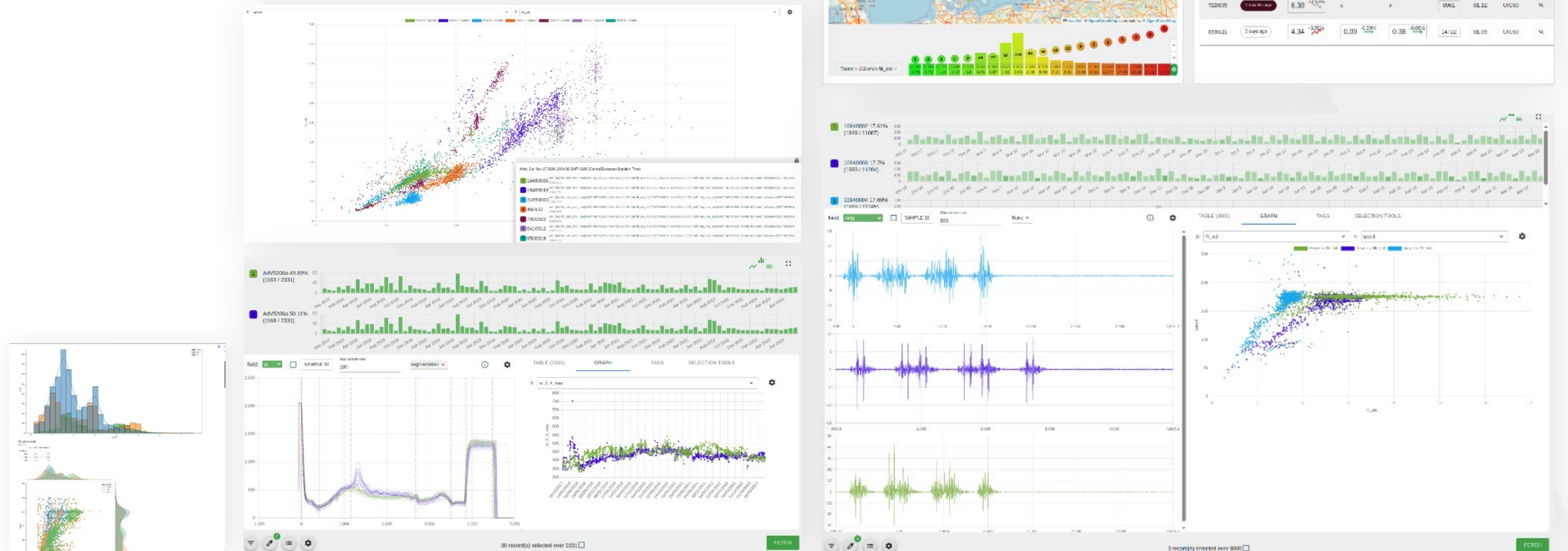
Data Lab workshops enable the establishment of a feedback loop between data scientists, maintenance and tracking experts.

This helps to define the target functions and build trust and understanding of the insights gained.

## How it works

### Main Features

- › Dashboard: quick look at your fleet.
- › Advanced querying tool: find exactly what you look for.
- › Track events: link data to the field.
- › Alarm studio: create your alert setup and simulate alarms on historical data.
- › Report generation: generate custom reports to further analyze your fleet. Each report type has its own focus.







# Data Lab

## Advanced Rail data analysis

### Additional Features

- › Build actionable indicators
- › Improve your knowledge on the monitored system
- › Build trust in your monitoring tool
- › Simulate alarm settings
- › Analyse the impact of your maintenance
- › Create customized reports

